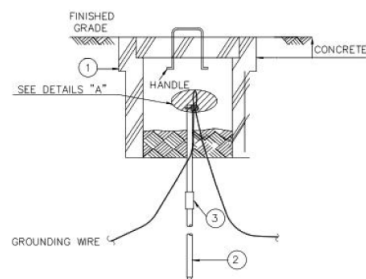


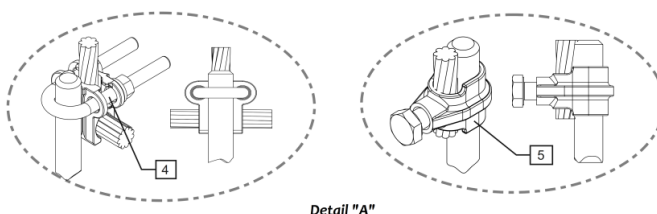


Product Name	Reinforced Concrete Inspection Pit With Link
Product Code	EIP654L
Application	Grounding/Earthing And Lightning Protection
Applicable Standards	IEC 62561-5

Product Information	
Dimensions	400mm(L) x 400mm(W) x 400mm(D)
Reinforcement	Steel Rebar Ø8mm
Rated Pressure	30kN (Acc. To IEC 62561-5) Heavy Vehicles Pass Allowed
Concrete Grade	400
Internal Dimensions	300mm(L)x300mm(W)x400mm(D)
Cover	Reinforced Concrete Square Shape
Earth Bar	Copper (C101) 140mm Length x 90mm ² (30x3mm) With 3 Terminals (Earth Bars can be manufactured acc. To Order)
Inspection pits are mandatory in Earthing system acc. To BS7430 or IEC 62305 and Concrete Inspection Pits are Perfect for Heavy Duty Industrial Projects.	



Typical Instalation of Earth inspection Pit and Earth Rods.



Detail "A"

ITEM	Desc	Desc.	Ord. Code	QTY
1		Earth Inspection Pit	EIPXXC	1
2		Earth Rod	ER-CBHx*1500-TT	2
3		Earth Rod Coupling	CO-CBX	1
4		U-Clamp	UCSSX-X	1
5		Rod to Wire Clamp	RWCX	1