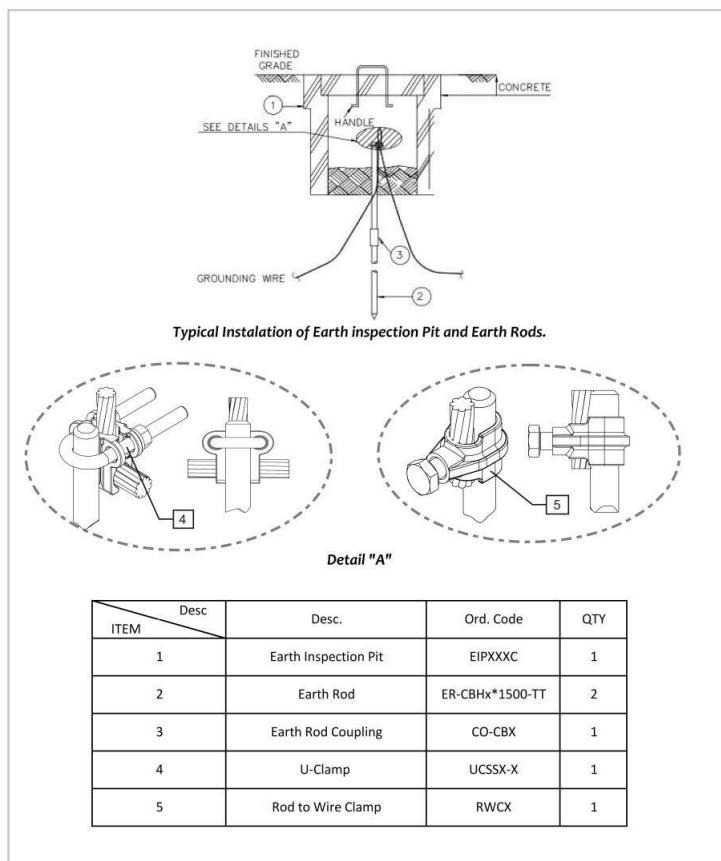




Product Name	Reinforced Concrete Inspection Pit
Product Code	EIP333
Application	Grounding/Earthing And Lightning Protection
Applicable Standards	IEC 62561-5



Product Information	
Dimensions	300mm(L) x 300mm(W) x 300mm(D)
Reinforcement	Steel Rebar Ø8mm
Rated Pressure	30kN (Acc. To IEC 62561-5) Heavy Vehicles Pass Allowed
Concrete Grade	400
Internal Dimensions	240mm(L)x240mm(W)x300mm(D)
Cover	Reinforced Concrete Square Shape
Inspection pits are mandatory in Earthing system acc. To BS7430 or IEC 62305 and Concrete Inspection Pits are Perfect for Heavy Duty Industrial Projects.	

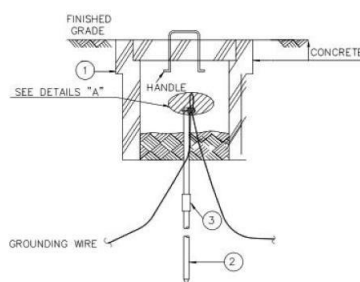




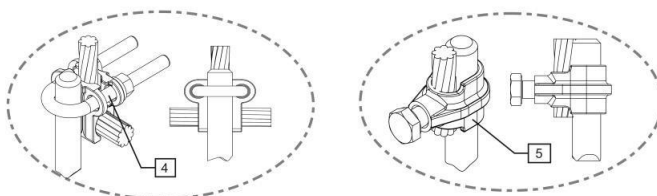
Product Name	Reinforced Concrete Inspection Pit With Connection Link
Product Code	EIP333CL
Application	Grounding/Earthing And Lightning Protection
Applicable Standards	IEC 62561-5



Product Information	
Dimensions	300mm(L) x 300mm(W) x 300mm(D)
Reinforcement	Steel Rebar Ø8mm
Rated Pressure	30kN (Acc. To IEC 62561-5) Heavy Vehicles Pass Allowed
Concrete Grade	400
Internal Dimensions	240mm(L)x240mm(W)x300mm(D)
Cover	Reinforced Concrete Square Shape
Earth Bar	Copper (C101) (Earth Bars can be manufactured acc. To Order)
Inspection pits are mandatory in Earthing system acc. To BS7430 or IEC 62305 and Concrete Inspection Pits are Perfect for Heavy Duty Industrial Projects.	



Typical Instalation of Earth inspection Pit and Earth Rods.



Detail "A"

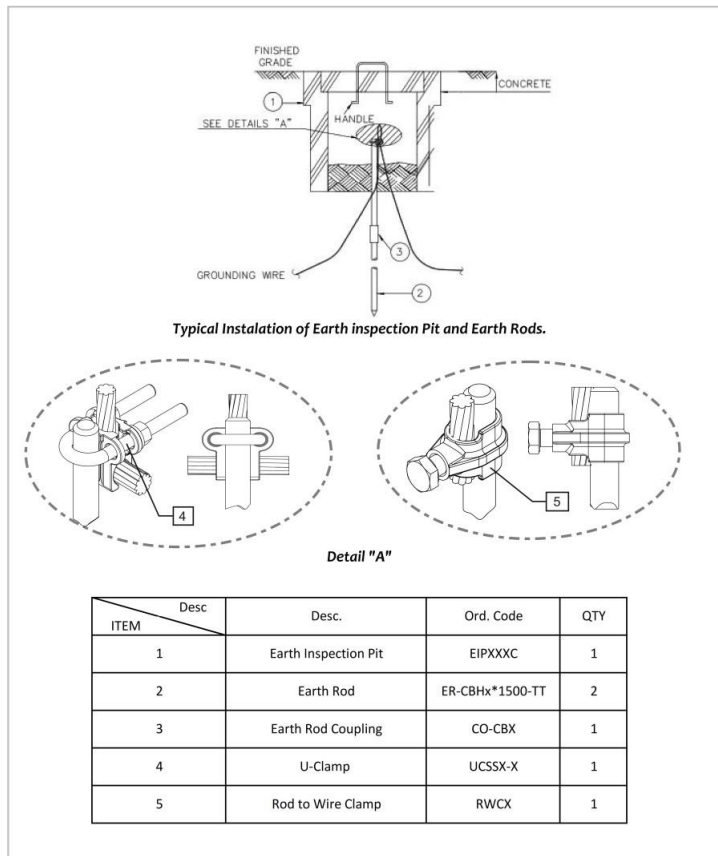
ITEM	Desc	Desc.	Ord. Code	QTY
1		Earth Inspection Pit	EIPXXXC	1
2		Earth Rod	ER-CBHx*1500-TT	2
3		Earth Rod Coupling	CO-CBX	1
4		U-Clamp	UCSSX-X	1
5		Rod to Wire Clamp	RWCX	1



Product Name	Reinforced Concrete Inspection Pit With Link
Product Code	EIP444
Application	Grounding/Earthing And Lightning Protection
Applicable Standards	IEC 62561-5



Product Information	
Dimensions	400mm(L) x 400mm(W) x 400mm(D)
Reinforcement	Steel Rebar Ø8mm
Rated Pressure	30kN (Acc. To IEC 62561-5) Heavy Vehicles Pass Allowed
Concrete Grade	400
Internal Dimensions	300mm(L)x300mm(W)x400mm(D)
Cover	Reinforced Concrete Square Shape
Inspection pits are mandatory in Earthing system acc. To BS7430 or IEC 62305 and Concrete Inspection Pits are Perfect for Heavy Duty Industrial Projects.	

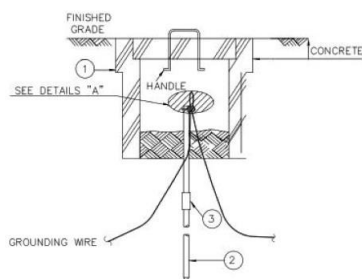




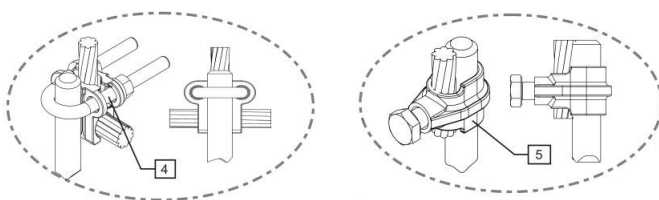
Product Name	Reinforced Concrete Inspection Pit With Link
Product Code	EIP444CL
Application	Grounding/Earthing And Lightning Protection
Applicable Standards	IEC 62561-5



Product Information	
Dimensions	400mm(L) x 400mm(W) x 400mm(D)
Reinforcement	Steel Rebar Ø8mm
Rated Pressure	30kN (Acc. To IEC 62561-5) Heavy Vehicles Pass Allowed
Concrete Grade	400
Internal Dimensions	300mm(L)x300mm(W)x400mm(D)
Cover	Reinforced Concrete Square Shape
Earth Bar	Copper (C101) (Earth Bars can be manufactured acc. To Order)
Inspection pits are mandatory in Earthing system acc. To BS7430 or IEC 62305 and Concrete Inspection Pits are Perfect for Heavy Duty Industrial Projects.	



Typical Installation of Earth inspection Pit and Earth Rods.



Detail "A"

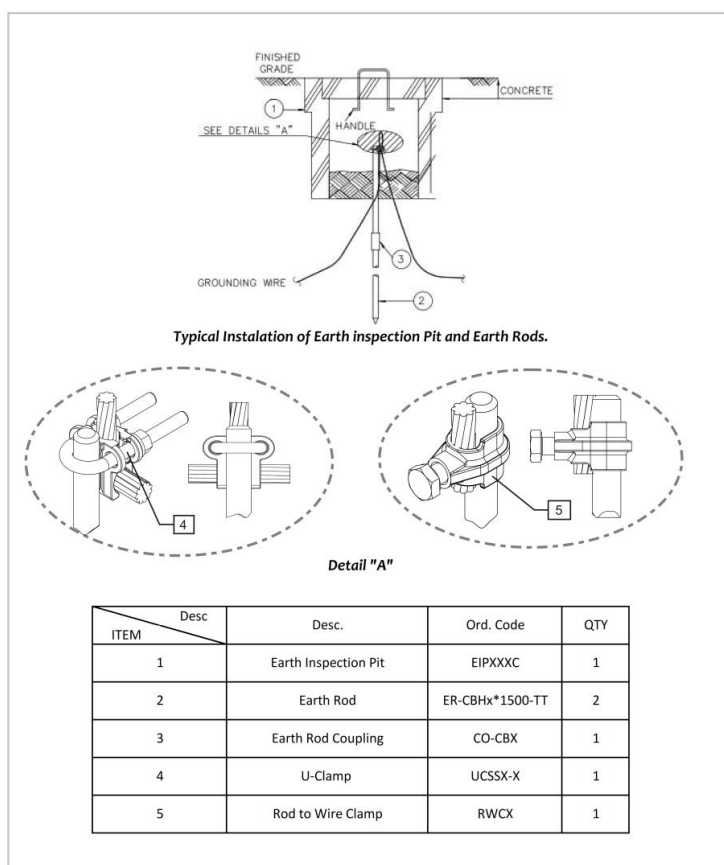
ITEM	Desc.	Ord. Code	QTY
1	Earth Inspection Pit	EIPXXXC	1
2	Earth Rod	ER-CBHx*1500-TT	2
3	Earth Rod Coupling	CO-CBX	1
4	U-Clamp	UCSSX-X	1
5	Rod to Wire Clamp	RWCX	1



Product Name	Reinforced Concrete Inspection Pit
Product Code	EIP453
Application	Grounding/Earthing And Lightning Protection
Applicable Standards	IEC 62561-5



Product Information	
Dimensions	450mm(L) x 450mm(W) x 300mm(D)
Reinforcement	Steel Rebar Ø8mm
Rated Pressure	30kN (Acc. To IEC 62561-5) Heavy Vehicles Pass Allowed
Concrete Grade	400
Internal Dimensions	450mm(L)x450mm(W)x300mm(D)
Cover	Reinforced Concrete Square Shape
Inspection pits are mandatory in Earthing system acc. To BS7430 or IEC 62305 and Concrete Inspection Pits are Perfect for Heavy Duty Industrial Projects.	

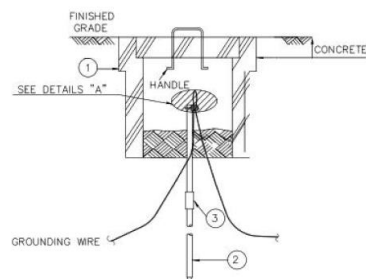




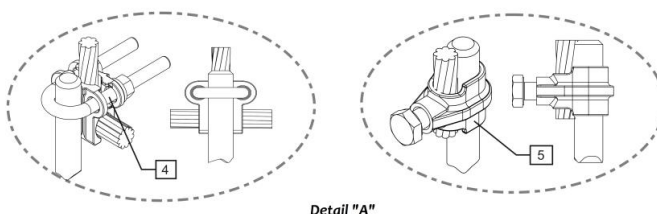
Product Name	Reinforced Concrete Inspection Pit With Connection Link
Product Code	EIP453CL
Application	Grounding/Earthing And Lightning Protection
Applicable Standards	IEC 62561-5



Product Information	
Dimensions	450mm(L) x 450mm(W) x 300mm(D)
Reinforcement	Steel Rebar Ø8mm
Rated Pressure	30kN (Acc. To IEC 62561-5) Heavy Vehicles Pass Allowed
Concrete Grade	400
Internal Dimensions	450mm(L)x450mm(W)x300mm(D)
Cover	Reinforced Concrete Square Shape
Earth Bar	Copper (101C) (Earth Bars can be manufactured acc. To Order)
Inspection pits are mandatory in Earthing system acc. To BS7430 or IEC 62305 and Concrete Inspection Pits are Perfect for Heavy Duty Industrial Projects.	



Typical Instalation of Earth inspection Pit and Earth Rods.

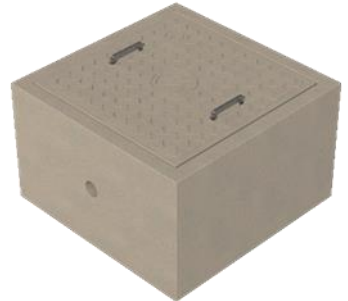


Detail "A"

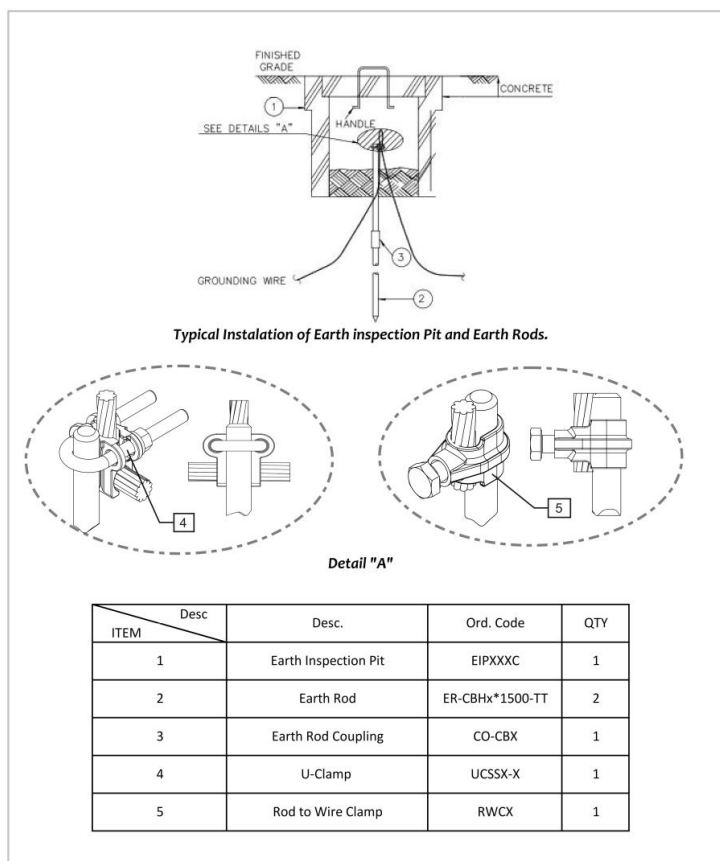
ITEM	Desc	Desc.	Ord. Code	QTY
1		Earth Inspection Pit	EIPXXC	1
2		Earth Rod	ER-CBHx*1500-TT	2
3		Earth Rod Coupling	CO-CBX	1
4		U-Clamp	UCSSX-X	1
5		Rod to Wire Clamp	RWCX	1



Product Name	Reinforced Concrete Inspection Pit
Product Code	EIP654
Application	Grounding/Earthing And Lightning Protection
Applicable Standards	IEC 62561-5

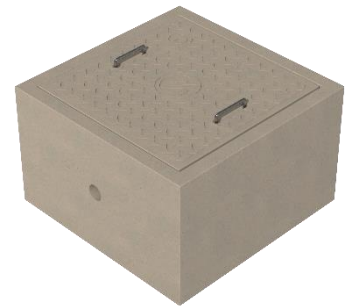


Product Information	
Dimensions	650mm(L) x 650mm(W) x 400mm(D)
Reinforcement	Steel Rebar Ø10mm
Rated Pressure	30kN (Acc. To IEC 62561-5) Heavy Vehicles Pass Allowed
Concrete Grade	400
Internal Dimensions	450mm(L)x450mm(W)x300mm(D)
Cover	Reinforced Concrete Rectangular Shape
Inspection pits are mandatory in Earthing system acc. To BS7430 or IEC 62305 and Concrete Inspection Pits are Perfect for Heavy Duty Industrial Projects.	

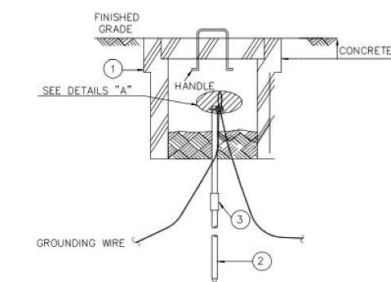




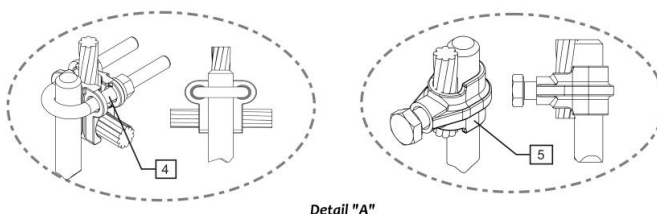
Product Name	Reinforced Concrete Inspection Pit With Link
Product Code	EIP654CL
Application	Grounding/Earthing And Lightning Protection
Applicable Standards	IEC 62561-5



Product Information	
Dimensions	650mm(L) x 650mm(W) x 400mm(D)
Link	Copper Tape 6-Hole Size (250x50x5) mm ³
Reinforcement	Steel Rebar Ø10mm
Rated Pressure	30kN (Acc. To IEC 62561-5) Heavy Vehicles Pass Allowed
Concrete Grade	400
Internal Dimensions	500mm(L)x500mm(W)x300mm(D)
Cover	Reinforced Concrete Rectangular Shape
Earth Bar	Copper (101C) (Earth Bars can be manufactured acc. To Order)
Inspection pits are mandatory in Earthing system acc. To BS7430 or IEC 62305 and Concrete Inspection Pits are Perfect for Heavy Duty Industrial Projects.	



Typical Installation of Earth inspection Pit and Earth Rods.

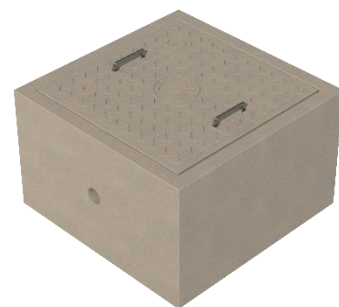


Detail "A"

ITEM	Desc	Desc.	Ord. Code	QTY
1		Earth Inspection Pit	EIPXXC	1
2		Earth Rod	ER-CBHx*1500-TT	2
3		Earth Rod Coupling	CO-CBX	1
4		U-Clamp	UCSSX-X	1
5		Rod to Wire Clamp	RWCX	1



Product Name	Reinforced Concrete Inspection Pit With Tin plated Connection Link
Product Code	EIP654CL
Application	Grounding/Earthing And Lightning Protection
Applicable Standards	IEC 62561-5



Product Information	
Dimensions	650mm(L) x 650mm(W) x 400mm(D)
Link	Copper Tape 4-Hole Size (300x50x5) mm ³
Reinforcement	Steel Rebar Ø10mm
Rated Pressure	30kN (Acc. To IEC 62561-5) Heavy Vehicles Pass Allowed
Concrete Grade	400
Internal Dimensions	500mm(L)x500mm(W)x300mm(D)
Cover	Reinforced Concrete Rectangular Shape
Earth Bar	Tin plated copper (Earth Bars can be manufactured acc. To Order)
Inspection pits are mandatory in Earthing system acc. To BS7430 or IEC 62305 and Concrete Inspection Pits are Perfect for Heavy Duty Industrial Projects.	

